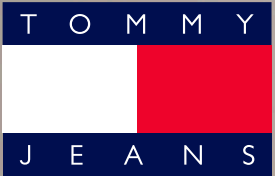


# TOMMY COLLECTION

FALL 2023



FALL 2023

# TOMMY COLLECTION BY TOMMY JEANS

## N.Y. UNIFORM

THE FALL 2023 EDITION OF TOMMY COLLECTION BY TOMMY JEANS REIMAGINES THE NY STREETWEAR UNIFORM IN A UTILITARIAN-LUX CLASH OF HIP-HOP AND HARD ROCK. THIS COMES TO LIFE IN A MASH-UP OF OUR WORKWEAR HERITAGE WITH MODERN TECH REFERENCES, CREATING A NEW EXPRESSION OF TOMMY ARCHETYPES. WITH ROCK 'N ROLL AND NY HIP-HOP UNEXPECTEDLY COMING TOGETHER, THE COLLECTION REFRESHES SOME SIGNATURE SILHOUETTES SUCH AS A MIXED MEDIA MODULAR ALASKA PUFFER, REVERSIBLE SHIRTS AND A METALLIC TAKE ON THE CHICAGO WINDBREAKER. MUSIC FURTHER SPARKS A THEME OF BAND AND TOUR PRINTS ON WASHED TEES, CROPPED RUGBIES AND A BLAZER, ADDING A DOSE OF REINVENTED PREP TO THE MIX. MOTOR SPORT INFLUENCES LAND IN LEATHER BIKER JACKETS, SLIM FIT LEATHER PANTS AND KNITTED RACER SHORTS. NEW WORKWEAR INTERPRETATIONS INCLUDE CARGO PANTS IN LUX WOOL BLENDS, AN OVERSIZED FIELD JACKET WITH REGATTA DETAILING AND SKORTS. A TRACKSUIT BLENDS IT ALL TOGETHER THROUGH A CONTEMPORARY BLACK AND WHITE COLOR-BLOCK. THE PALETTE OF FULL BLACK AND ANCIENT WHITE IS ENRICHED WITH SHADES OF DEEP CRIMSON, MISTY VALE AND PUMPKIN PARADISE. A SECTION OF RED PIECE-DYED DENIM ITEMS WITH BLACK SPRAY COLOR EFFECTS ADDS BOLDNESS. THIS SEASON, THE CHECKERBOARD PATTERN IS MIXED IN WITH CAMO, CREATING A NEW GRAPHIC STATEMENT ACROSS SHIRTS, POLAR FLEECE HALF-ZIPS, INTARSIA KNITS AND A DENIM TRUCKER AND JEAN COMBO. THROUGHOUT THE COLLECTION, OUR DEDICATED EFFORTS TO KEEP PUSHING SUSTAINABILITY FORWARD REMAIN KEY.





# 01

**MODULAR ALASKA PUFFER** Black | **GRAPHIC CABLE CREW SWEATER** Black | **PLEATED RELAXED SKORT** Black | **MOTO GLOVES** Black | **ITEM CROSSOVER MOTO** Black Moto | **LONG SHAFT BIKER BOOT** Black



**POLAR FLEECE ZIPMOCK** Boulevard Grey |  
**RIBBED JERSEY CUT OUT DRESS** Deep Crimson |  
**BEANIE** Black | **LONG SHAFT BIKER BOOT** Black

02





# 03

LEFT:  
**TRUCKER JACKET** Black |  
**HEAVY WASH GRAPHIC TEE** Black |  
**WIDE FIT PANT** Black |  
**LANYARD POUCHES** Black |

RIGHT:  
**TRUCKER JACKET** Black |  
**RIBBED JERSEY BRA TOP** Deep Crimson |  
**RIBBED JERSEY LEGGING** Deep Crimson |  
**ITEM CROSSOVER MOTO** Black Moto |  
**LACE UP PADDED BOOT** Black



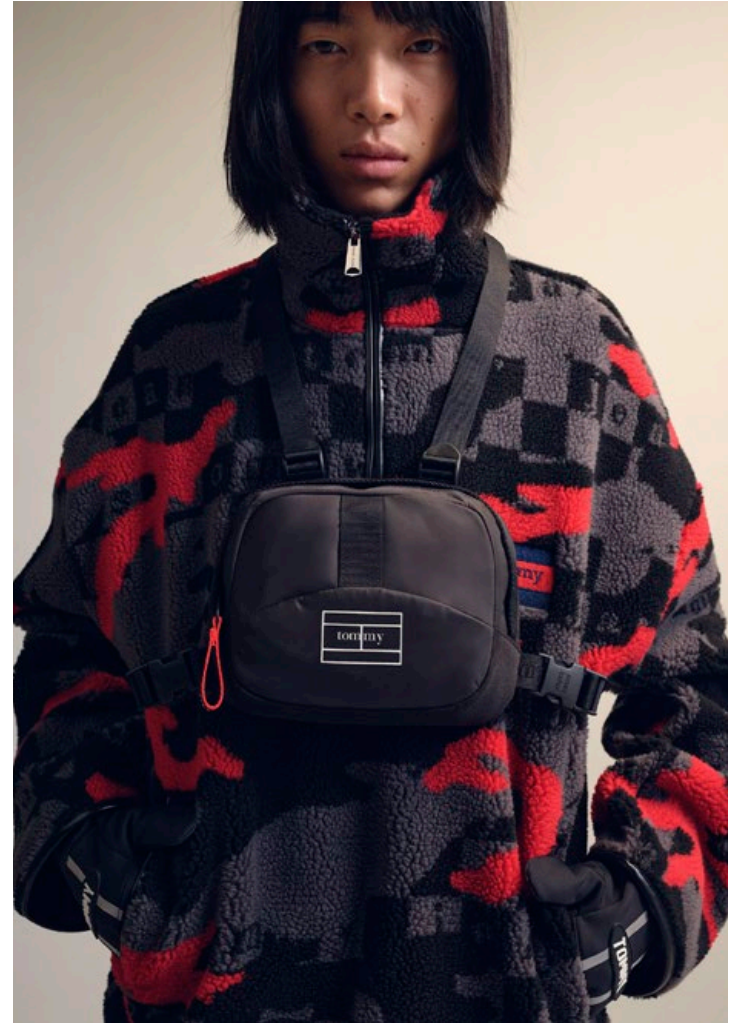
**COLORBLOCK TRACKTOP** Black | **BACKLESS LONGSLEEVE CROPTOP** Black |  
**COLORBLOCK TRACK PANT** Black | **LACE UP PADDED BOOT** Black

04





# 05



**POLAR FLEECE ZIPMOCK** Boulevard Grey | **HEAVY WASH GRAPHIC TEE** Black | **GRAPHIC SWEAT PANT** Black | **MOTO GLOVES** Black | **CHESTBAG** Black

# 06

**LEATHER BIKER JACKET** Black | **GRAPHIC CROPPED RUGBY** Black |  
**SPACEDYED KNIT RACER SHORT** Boulevard Grey |  
**ITEM CROSSOVER MOTO** Black Moto | **LONG SHAFT BIKER BOOT** Black







07



**COZY V-NECK INTARSIA SWEATER** Ancient White |  
**HEAVY WASH GRAPHIC TEE** Ancient White | **GRAPHIC SWEAT PANT** Black |  
**BEANIE** Black | **MOTO GLOVES** Black | **LANYARD POUCHES** Black



**TRUCKER JACKET** Denim Medium | **HEAVY WASH GRAPHIC TEE** Black | **WIDE FIT PANT** Denim Medium | **LACE UP PADDED BOOT** Black

08





# 09



LEFT:  
**REVERSIBLE POPLIN OVERSHIRT** Boulevard Grey |  
**HEAVY WASH GRAPHIC TEE** Black | **HOODIE GARMENT WASH** Misty Vale |  
**GARMENT DYED DRESS** Misty Vale | **ITEM CROSSOVER MOTO** Black Moto |  
**LONG SHAFT BIKER BOOT** Black

RIGHT:  
**REVERSIBLE POPLIN OVERSHIRT** Boulevard Grey |  
**HOODIE GARMENT WASH** Misty Vale | **HEAVY WASH GRAPHIC TEE** Black |  
**GRAPHIC SWEAT PANT** Black | **CROSSBODY** Black



# 10



**CHECKERBOARD SATEEN BOMBER** Ancient White |  
**GRAPHIC CROPPED RUGBY** Ancient White |  
**HEAVY WASH GRAPHIC TEE** Ancient White |  
**GRAPHIC SWEAT PANT** Ancient White |  
**LACE UP PADDED BOOT** Black

# 11

LEFT:  
**DECONSTRUCTED GRAPHIC BLAZER** Black |  
**HEAVY WASH GRAPHIC TEE** Black |  
**LEATHER FIVE POCKET** Black

RIGHT:  
**GRAPHIC CROPPED RUGBY** Black |  
**SPACEDYED KNIT RACER SHORT** Boulevard Grey |  
**ITEM CROSSOVER MOTO** Black Moto |  
**LONG SHAFT BIKER BOOT** Black

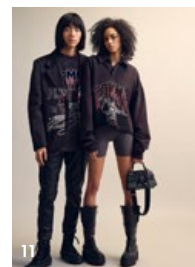
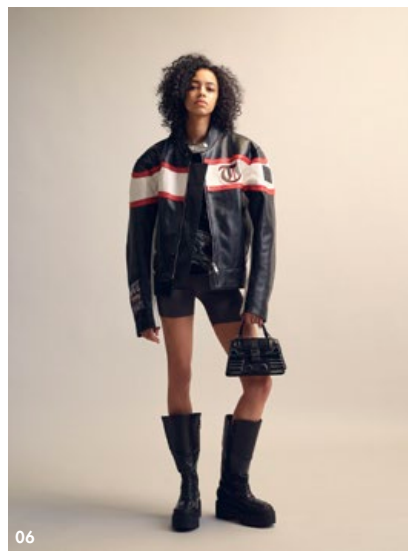




# 12

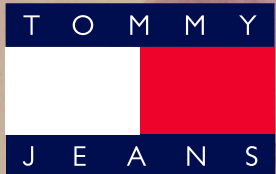
LEFT:  
**COTTON TWILL FIELD JACKET** Pumpkin Paradise |  
**BACKLESS LONGSLEEVE CROPTOP** Pumpkin Paradise |  
**GARMENT WASH SWEATPANT** Pumpkin Paradise |  
**MOTO GLOVES** Black |  
**LACE UP PADDED BOOT** Black

RIGHT:  
**PACKABLE CHICAGO** Pumpkin Paradise |  
**TEE** Pumpkin Paradise |  
**WIDE FIT CARGO TROUSERS** Black |  
**MOTO GLOVES** Black



# TOMMY JEANS

FALL 2023





FALL 2023

# TOMMY JEANS COLLECTION

## BRAVE NEW CLASSICS

BRAVE NEW CLASSICS, THE FALL 2023 TOMMY JEANS COLLECTION, TOUGHENS UP BY REINVENTING STREETWEAR THROUGH MOTOR SPORTS, CELEBRATING OUR HIP-HOP HERITAGE AND EXPLORING NEW PROPORTIONS IN DENIM CLASSICS. THIS CLASH OF MODERN AND CLASSIC BRINGS ABOUT A FURTHER EXPLORATION OF BAGGY, OVERSIZED SILHOUETTES THROUGHOUT, CONTRASTED WITH AN INJECTION OF ULTRA-CROPPED STYLES FOR WOMEN. THE COLLECTION FINDS NEW WAYS TO REDEFINE ICONIC PREP, INCLUDING A BOMBER IN PLEATHER, A CORD LETTERMAN JACKET IN WOOL AND A CARDIGAN IN A NEW BOXY FIT. THE ALASKA PUFFER GETS UPDATED IN BOTH LONGLINE AND CROPPED LENGTHS FOR HER, ADDING A WOODLAND CAMO PRINTED TAKE TO THE MIX FOR MEN. GRUNGE INFLUENCES MEET HIP-HOP AND MOTOR SPORTS IN LOOKS THAT PAIR CHECKED OVERSHIRTS WITH PLEATHER BANDEAU TOPS AND BUCKLED SKIRTS. COLORS RANGE FROM IVORY AND TAWNY SAND TO BLACK AND OLIVE GREEN, WITH SHOTS OF FRENCH ORCHID PINK AND DEEP ROUGE TO KEEP IT FRESH. IN PRINTS, THE COLLECTION EXPLORES ZEBRA AND LEOPARD ALL-OVERS IN FAUX FUR JACKETS FOR HER AND CAMO PRINTS FOR HIM. JEANS ARE BAGGY AND MADE IN 100% RECYCLED COTTON, PROGRESSING DENIM IN BOTH STYLE AND INNOVATION. THIS SEASON, IT'S ALL ABOUT LOOKING TO OUR HERITAGE TO SHAPE TODAY'S BRAVE NEW CLASSICS.





**IZZIE SLIM JACKET** Denim Dark | **CHECK OVERSHIRT** Black Check | **CHECK PLEATED MINI SKORT** Black Check | **COSY KNIT BEANIE** Deep Rouge | **HERITAGE BARREL BAG** Black | **CHUNKY BOOT HARDWARE** Black

# 01





# 02

**GRUNGE PLEATHER BOMBER** Rouge | **REGULAR TONAL LINEAR C-NECK** Black | **CLASSICS CHECK POCKET SHIRT** Rouge Check | **AIDEN BAGGY JEAN** Denim Black | **COSY KNIT BEANIE** Black | **HERITAGE ELEVATED BACKPACK** Winter Corporate | **RUBERIZED BOOT** Pewter Green



**OVERSIZED CHECK OVERSHIRT** Red Check | **CROPPED BUCKLE PLEATHER TOP** Black |  
**BUCKLE PLEATHER MINI SKIRT** Black | **COSY KNIT BEANIE** Black |  
**HERITAGE BARREL BAG** Black | **CHUNKY BOOT HARDWARE** Black

03





# 04

**CORDUROY WOOL MIX LETTERMAN** Black | **RELAXED NY GRUNGE HOODIE** Black | **CLASSIC ESSENTIAL CHECK SHIRT** Black Check | **AIDEN BAGGY JEAN** Denim Black | **HIGH-SHAFT SKATER SNEAKER** Black/ New Charcoal



# 05



**OVERSIZED TONAL APPLIQUE BOMBER** Black | **CHECK OVERSHIRT** Black Check | **BUSTIER TOP** Denim Black | **DAISY JEAN BAGGY** Denim Black | **COSY KNIT BEANIE** Black | **BOLD BUCKET BAG** Black | **CHUNKY BOOT HARDWARE** Black



# 06



**OVERSIZED TIGER CAMO DENIM SHIRT** Blue Tiger Camo Aop |  
**RELAXED GRUNGE ARCHIVE CREW** Chambray Blue |  
**REGULAR WASHED SIGNATURE HOODIE** Newsprint |  
**ISAAC RELAXED TAPERED JEAN** Denim Medium |  
**HIGH-SHAFT SKATER SNEAKER** Black/ New Charcoal



# 07



**ZEBRA SHERPA JACKET** Zebra Aop | **SLIM BELTED DRESS** Denim Light | **HERITAGE BARREL BAG** Black | **LACE UP PADDED BOOT** Black





08

ALASKA PROTECT PUFFER Black | BOXY LUXE VARSITY CREW Black |  
RELAXED TONAL LINEAR TEE Newsprint | AIDEN TAPERED PANT Drab Olive Green |  
HIGH-SHAFT SKATER SNEAKER Black / New Charcoal



# 09

**OVERSIZED PLEATHER OVERSHIRT** Black | **ESSENTIAL RIB TANK** Black |  
**SOPHIE STRAIGHT JEAN** Denim Dark | **COSY KNIT BEANIE** Black |  
**BOLD BUCKET BAG** Black | **HIGH HEEL LACE UP BOOT** Black





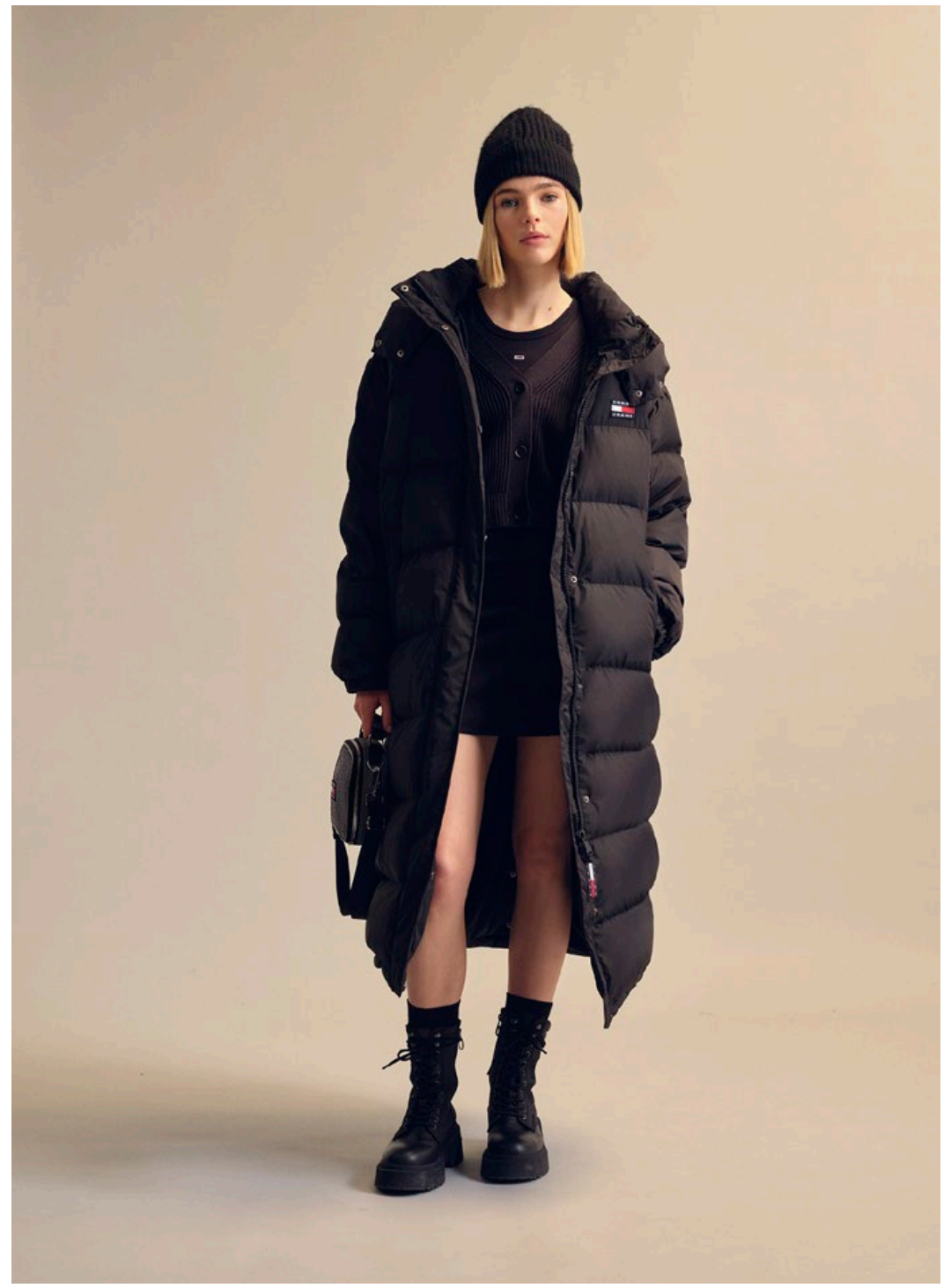
# 10

**OVERSIZED STATEMENT PUFFER** Newsprint |  
**OVERSIZED 1/2 ZIP POLAR** Ancient White |  
**RELAXED LUX PIPING JOGGER** Tawny Sand |  
**MIX MATERIAL BOOT** Sandalwood



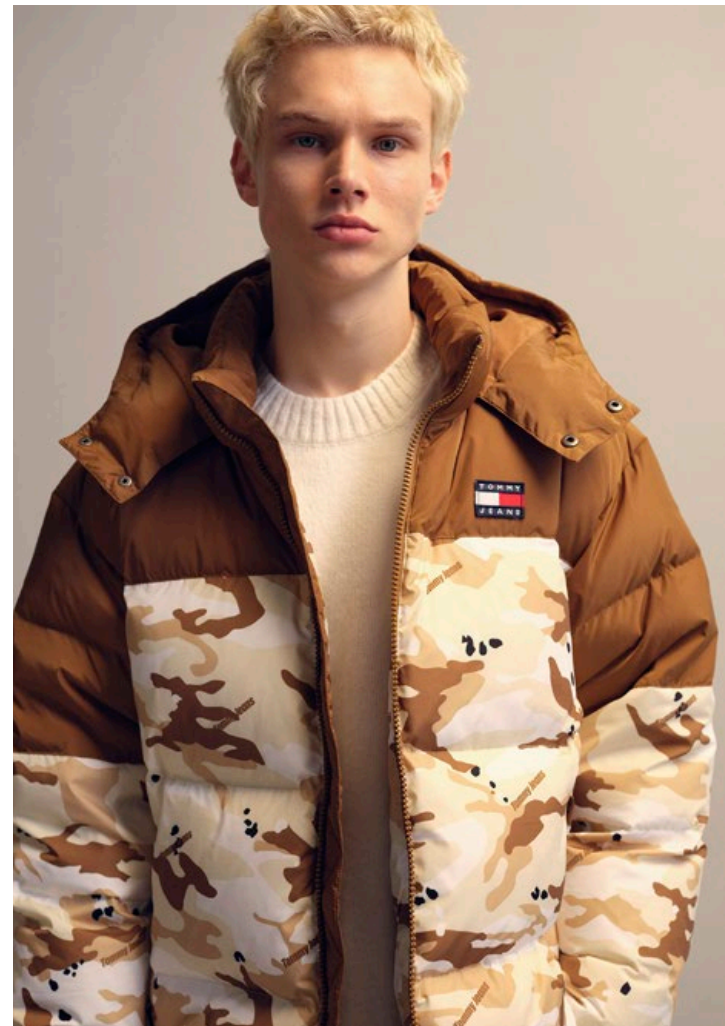
**ALASKA LONG PUFFER** Black | **ESSENTIAL BADGE CARDIGAN** Black |  
**ESSENTIAL RIB TANK BODYCON** Black | **COSY KNIT BEANIE** Black |  
**PARTY CROSSOVER** Black | **LACE UP PADDED BOOT** Black

# 11





12



**COLORBLOCK AOP ALASKA PUFFER** Woodland Camo Aop Beige |  
**BOXY CONTRAST POCKET SWEATER** Ancient White |  
**AUSTIN CARGO PANT** Newsprint | **COSY KNIT BEANIE** Ivory |  
**MIX MATERIAL BOOT** Sandalwood



**ULTRA CROPPED LEO FAUX FUR** Leo Aop |  
**CORDUROY BOYFRIEND OVERSHIRT** Tawny Sand |  
**WORKWEAR SKORT** Denim Dark |  
**HYBRID BOOT** Rouge / Twilight Navy / Bleached Stone

13





14



**AUTHENTIC ARMY BOMBER** Drab Olive Green |  
**RELAXED TONAL LINEAR HOODIE** Newsprint | **TONAL LINEAR TEE** White |  
**AIDEN TONAL LINEAR TRACK PANT** Newsprint | **COSY KNIT BEANIE** Ivory |  
**LEATHER CUPSOLE 2.0** Ecrú



15

**CROPPED ALASKA PUFFER** French Orchid |  
**BOXY OTTOMAN HOODIE** Ancient White |  
**OTTOMAN WORKWEAR SWEATPANT** Ancient White |  
**COSY KNIT BEANIE** French Orchid |  
**HYBRID BOOT** Rouge / Twilight Navy / Bleached Stone







# 16



**BOXY TONAL CARDIGAN** White | **TONAL LINEAR TEE** Newsprint |  
**AIDEN TONAL LINEAR TRACK PANT** Drab Olive Green |  
**ITEM FLAP CROSSOVER** Black Grid |  
**HIGH-SHAFT SKATER SNEAKER** Black/ New Charcoal



# 17

**LONG SATIN PUFFER** Drab Olive Green |  
**LEO PRINT HOOK&EYE TOP** Leo Aop |  
**LEO FLARE SKIRT** Leo Aop | **GOSY KNIT BEANIE** Ivory |  
**HYBRID BOOT** Rouge / Twilight Navy / Bleached Stone





18

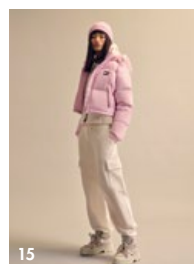
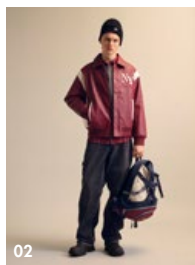
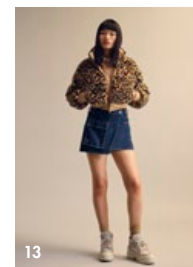
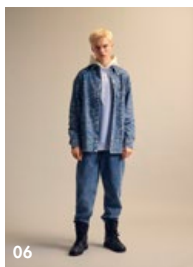
**OVERSIZED COLORBLOCK PUFFER PARKA** Ultra Blue | **RELAXED TONAL LINEAR TEE** Black | **SKATER CARGO CANVAS** Black | **COSY KNIT BEANIE** Black | **ITEM FLAP CROSSOVER** Black Grid | **HIGH-SHAFT SKATER SNEAKER** Black / New Charcoal



# 19

**DIAMOND QUILT VEST** Ancient White | **ESSENTIAL BADGE CARDIGAN** Ancient White | **BOXY ESSENTIAL LOGO HOODIE** Newsprint | **CLAIRE MIDI SKIRT** Denim Light | **COSY KNIT BEANIE** Ivory | **ITEM CROSSOVER MOTO** Black Moto | **SKATE SNEAKER** Ecru





01



**HERITAGE ELEVATED BACKPACK** Winter Corporate



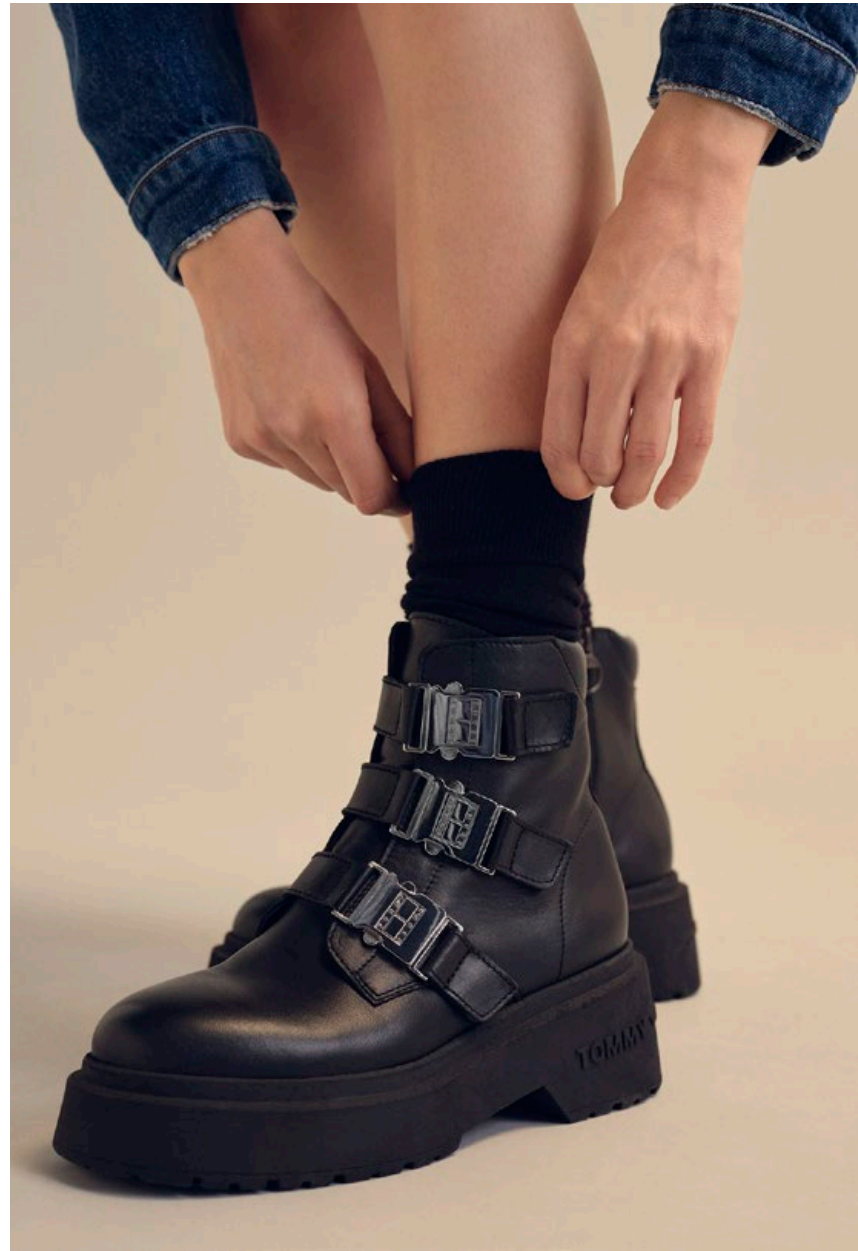
**MIX MATERIAL BOOT** Sandalwood

02

03



**LEATHER CUPSOLE 2.0** Ecrú



**CHUNKY BOOT HARDWARE** Black

04

05



HERITAGE BARREL BAG Black



# PRESS CONTACTS

## GLOBAL

TOMMY HILFIGER  
DANZINGERKADE 165  
1013 AP AMSTERDAM  
THE NETHERLANDS

**Ashleigh Mellor**  
Director Brand Communications  
World of Tommy  
T +31 63 10 24 630  
ashleighmellor@tommy.com

**Dominique Bacote**  
Manager Communications  
and PR World of Tommy  
T +1 212 548 1685  
dominiquebacote@tommy.com

## THE AMERICAS

TOMMY HILFIGER  
285 MADISON AVENUE, FLOOR 9  
NEW YORK, NY10017

**Shawna Schmitz**  
Senior Director, Communications  
& Earned Media  
Shawnaschmitz@tommy.com

**Yasmine Samatali**  
Senior Manager, Communications  
& Earned Media  
yasminesamatali@tommy.com

## LATIN AMERICA

TOMMY HILFIGER - ASW GROUP  
METROBANK TOWER, 14<sup>TH</sup> FLOOR  
PUNTA PACIFICA, ISAAC HANONO MISSRI  
STREET, PANAMA CITY, PANAMA

**Gabriela Arauz**  
Marketing Manager  
T +507 206 0555 ext. 3036  
garauz@aswgr.com

**Isabella Costa**  
PR & Communications Lead  
T +507 206 0555 ext. 3040  
icosta@aswgr.com

## ASIA PACIFIC

TOMMY HILFIGER  
17/F, TWO HARBOURFRONT  
22 TAK FUNG STREET  
HUNGHOM, KOWLOON  
HONG KONG

**KM Ho**  
Manager, Communications  
KMHo@tommy.com

## AUSTRALIA

TOMMY HILFIGER  
3-7 MCPHERSON STREET  
BANKSMEADOW, NSW 2019

**Dianne Taylor**  
T +61 419 417 591  
dianne.taylor@pvhba.com

**James Tawfik**  
T +61 0450 390 635  
James.Tawfik@pvhba.com

**Arlene Hubbard**  
T +61 29 31 62 127  
Arlene.Hubbard@pvh.com

## AUSTRIA

HAEBMAU. ATELIER  
ROSENTHALER STR. 52  
10178 BERLIN - GERMANY

**Bianca Ruessel**  
T +49 (0) 30 726 208 358  
bianca.ruessel@haebmau.de

**Sarah Rienecker**  
sarah.rienecker@haebmau.de

## BRAZIL

TOMMY HILFIGER - INBRANDS  
AV MARIA COELHO AGUIAR, 215 - CEP  
05804-900  
BLOCO C 2º ANDAR OU SUBSOLO  
(RECEBIMENTO E ENGENHARIA  
DE PRODUTO)  
JARDIM SÃO LUIZ, SÃO PAULO, SP

**Olivia Hanssen**  
T +55 11 98 821- 7821  
olivia.hanssen@inbrands.com.br

**Olivia Pereira**  
T +55 11 99 420-3912  
olivia.pereira@inbrands.com.br

## BULGARIA

UNITED PARTNERS  
120 KIRIL I METODII STR.  
SOFIA, BULGARIA

**Desislava Boyanova**  
T +359 887 70 07 98  
Desislava.boianova@united-partners.com

## CAMBODIA

TOMMY HILFIGER  
UNITY INTERNATIONAL TRADING CO.,  
T-ONE BUILDING, #53, SAMDACH PAN  
AVE, DAUN PENH, PHNOM PENH, CAMBODIA

**Jeremy Wong**  
T +855934161777  
jeremy@unity.com.kh

**Sokun Chea**  
T +85593836777  
sokun.chea@unity.com.kh

## CANADA

TOMMY HILFIGER  
285 MADISON AVENUE, FLOOR 9  
NEW YORK, NY10017

**Shawna Schmitz**  
Shawnaschmitz@tommy.com

## CHINA

TOMMY HILFIGER  
9/F, NO. 565 ANYUAN ROAD,  
JING'AN DISTRICT, SHANGHAI, 200040,  
CHINA

**Juliana Huang**  
T +86 21 22 87 14 00  
julianahuang@tommy.com

## CYPRUS

ACTION PR GROUP  
6 KONDILAKI STREET, 1090  
NICOSIA, CYPRUS

**Loukia Georgiou**  
loukia.g@actionprgroup.com

## EGYPT

NILE PROJECTS & TRADING CO  
281 SOUTH ELTESAEN ST.  
5<sup>TH</sup> SETTLEMENT, NEW CAIRO  
CAIRO, EGYPT

**Alaa Basyouni**  
T +201007416135  
Alaa-basyouni@nileprojects-fashion.com

## FRANCE

TOMMY HILFIGER FRANCE  
137 RUE DU FAUBOURG SAINT-HONORÉ  
75008 PARIS

**Noémie Dery**  
T +33 176 537 911  
Noemie.Dery@tommy.com

## GCC/MIDDLE EAST

27  
DUBAI DESIGN DISTRICT  
BUILDING 5  
OFFICE B306  
P.O BOX 333020  
DUBAI, UAE

**Maha Osman, Senior Account Executive**  
T +971 4 447 7238  
M +971 55 281 4861  
maha@z7communications.com

**Sahithya Shetty, Senior Account Manager**  
T +971 4 447 7238  
M +971 52 517 7271  
sahithya@z7communications.com

**Ibrahim Ahmed, Group Director**  
T +971 4 447 7238  
M +971 55 483 4672  
ibrahim@z7communications.com

## GERMANY

HAEBMAU. ATELIER  
ROSENTHALER STR. 52  
10178 BERLIN - GERMANY

**Bianca Ruessel**  
T +49 (0) 30 726 208 358  
bianca.ruessel@haebmau.de

**Sarah Rienecker**  
sarah.rienecker@haebmau.de

## GREECE

OUTSTAND COMMUNICATIONS  
40 KYRIAZI & KASSAVETI STR.  
KIFISSIA 14562, ATHENS

**Alexia Sakellariou**  
T +30 21 03 31 10 00  
a.sakellariou@outstand.gr

## HONG KONG

TOMMY HILFIGER  
17/F, TWO HARBOURFRONT  
22 TAK FUNG STREET  
HUNGHOM, KOWLOON

**Wing Ching**  
WingChing@tommy.com

## INDIA

TOMMY HILFIGER  
Nº 4, BRUNTON 1<sup>ST</sup> CROSS ROAD  
BANGALORE 560025

**Aadhya Gupta**  
T +91 995 849 4608  
aadhya.gupta@th-india.com

## INDONESIA

TOMMY HILFIGER  
PT MITRA ADIPERKASA TBK  
LEVEL 28, SAHID SUDIRMAN CENTER  
JALAN JENDRAL SUDIRMAN KAV. 86  
JAKARTA, PUSAT 10220

**Hammarliandi K**  
T +62 21 80 64 82 55 ex 82166  
Hammarliandi.K@map.co.id

## ISRAEL

FACTORY 54 | IRANI CORP  
DEREKH BEN-ZVI, TEL AVIV-YAFO  
TEL-AVIV, TLV, 6810431 IL

**Shir Ifrach**  
M. +972546268175  
shirif@iranigroup.co.il

Emmanuelle Silberstein  
T +972 54 45 46 555  
emmanuelles@iranigroup.co.il

## ITALY

TOMMY HILFIGER ITALY  
VIA PODGORA 2  
20122 MILAN

**Valentina Villa**  
T +39 348 62 79 609  
Valentina.Villa@tommy.com

## JAPAN

TOMMY HILFIGER JAPAN  
16 FLOOR HIBIYA PARKFRONT  
2-1-6 UCHISAIWAICHO CHIYODA-KU,  
TOKYO 100-0011

**Miyuki Ozawa**  
T +813 66 33 08 07  
miyukiozawa@tommy.com

**Natsuki Munakata**  
T +813 66 31 37 09  
NatsukiMunakata@tommy.com

## KOREA

TOMMY HILFIGER  
HANDSOME CORP.  
195 GANGDONG-DAERO,  
GANGDONG-GU  
SEOUL, KOREA, 05402

**Soo Choi**  
soo.choi@thehandsome.com

## MALAYSIA

TOMMY HILFIGER  
LEVEL 6-3, MENARA KHUAN CHOO  
75A, JALAN RAJA CHULAN  
KUALA LUMPUR, MALAYSIA 50200

**Joyce Wong**  
T +60 32 11 07 870  
JoyceWong@tommy.com

## MEXICO

TOMMY HILFIGER  
BOULEVARD MANUEL ÁVILA CAMACHO N.0 5  
TORRE C, PISO 22,  
COL. FRACCIONAMIENTO LOMAS DE SOTEL  
NAUCALPAN DE JUÁREZ,  
ESTADO DE MÉXICO,  
CP. 53390

**Georgina Franco Su**  
T +52 (55) 30 00 52 95  
gfranco@grupoaxo.com

**Jaime Carmona Estrada**  
T +52 (55) 44 90 65 95  
jcarmonae@grupoaxo.com

## THE NETHERLANDS

TOMMY HILFIGER  
DANZINGERKADE 165, FLOOR 9  
1013 AP AMSTERDAM

**Omyra Samadi**  
T +31 20 70 98 934  
Omyra.Samadi@tommy.com

## PHILIPPINES

TOMMY HILFIGER  
STORES SPECIALISTS, INC.  
5TH FLOOR, MIDLAND BLDG.  
403 SEN GIL PUYAT AVE.  
MAKATI CITY, PHILIPPINES, 1209

**Michelle Suarez**  
T +63 890 1239  
MHSuarez@goc.com.ph

## ROMANIA

PANDORRA  
STR. PUTUL LUI ZAMFIR, NR 23  
SECTOR 1, BUCHAREST

**Raluca Stana**  
T +40 07 66 27 913  
raluca.stana@pandorrastyle.ro

## SINGAPORE

TOMMY HILFIGER  
491B RIVER VALLEY ROAD  
14-01 VALLEY POINT  
SINGAPORE 248373

**Joyce Wong**  
T +60 32 11 07 870  
JoyceWong@tommy.com

## SPAIN

FINALLY  
CONDE DE XIQUENA 4-2º  
28004 MADRID

**Hugo Aragón**  
T +34 91 52 15 028  
haragon@finallypress.com

## SWITZERLAND

HAEBMAU. ATELIER  
ROSENTHALER STR. 52  
10178 BERLIN - GERMANY

**Bianca Ruessel**  
T +49 (0) 30 726 208 358  
bianca.ruessel@haebmau.de

**Sarah Rienecker**  
sarah.rienecker@haebmau.de

## TAIWAN

TOMMY HILFIGER  
17F, NO.109, SEC. 3, MINSHENG E. ROAD  
SONGSHAN DISTRICT, TAIPEI 105402,  
TAIWAN

**Wacken Huang**  
wackenhuang@tommy.com

## THAILAND

TOMMY HILFIGER  
CENTRAL MARKETING GROUP  
3388/25-37 SIRINRAT BUILDING 14<sup>TH</sup>  
FLOOR,  
RAMA IV RD., KLONG-TON, KLONG-TOEY,  
BANGKOK 10110, THAILAND

**Onteera Phentrakarn (Paytong)**  
onteera.ph@cmg.co.th

## TURKEY

TOMMY HILFIGER TURKEY  
RUMELIHISARI MAH. YILDIRIM OĞUZ  
GÖKER CAD.  
ORKIDE SOK. NO:1 MAYADROM OFIS PARK  
34335 AKATLAR / ISTANBUL

**Anita Koncabahar**  
T +90 2123 714 129  
anita.koncabahar@tommy.com

## UK

PVH UK  
LINEN HALL  
162-168 REGENT STREET  
W1B 5TB

**Nadia Cropp**  
T +44 7976 531 295  
nadiacropp@pvh.com

## VIETNAM

TOMMY HILFIGER  
AU CHAU FASHION & COSMETICS CO., LTD  
LEVEL 12, SONATUS BUILDING,  
15 LE THANH TON STREET, DISTRICT 1  
HO CHI MINH CITY, VIETNAM

**Tran Tuan Ninh**  
T +84 28 3827 5333  
ninh.trantuan@acfc.com.vn

T O M M Y



J E A N S